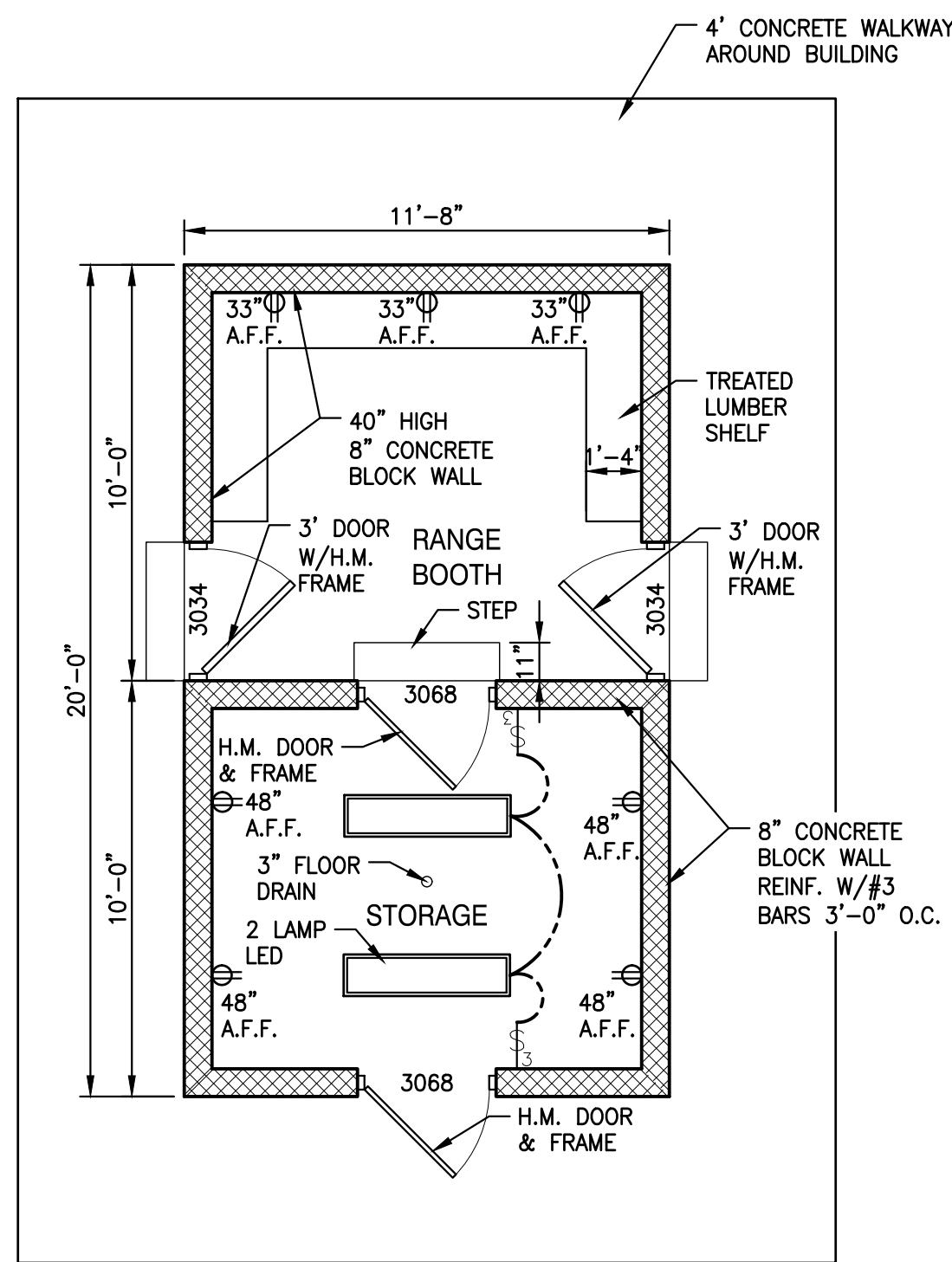
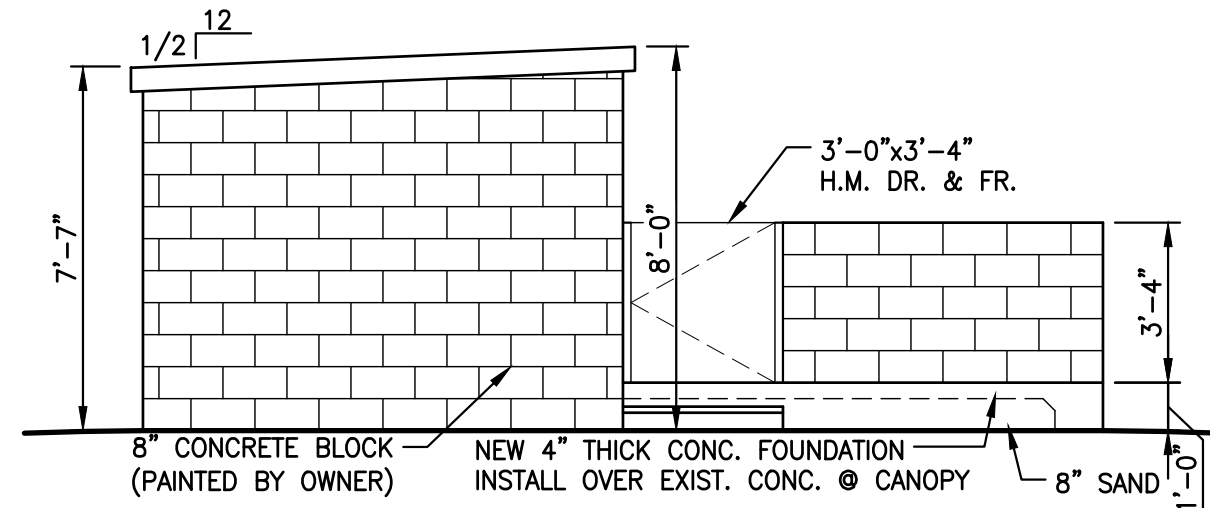


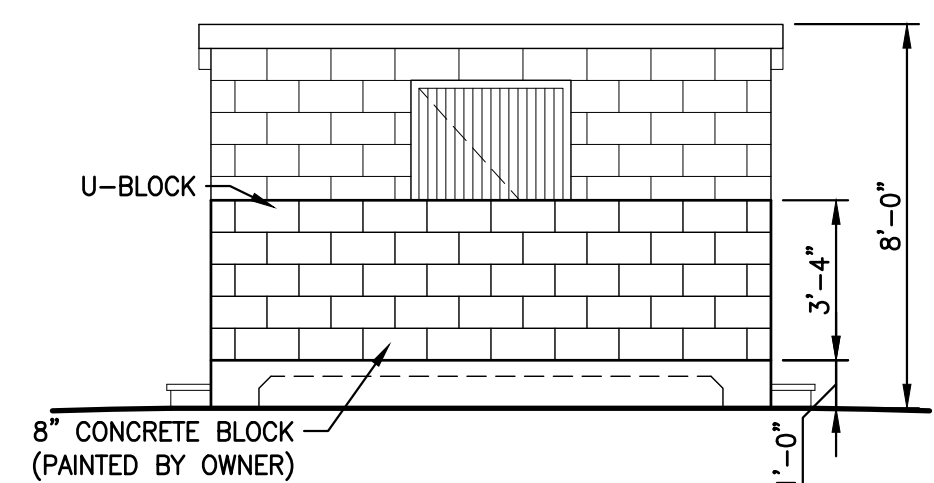
TRAINING ACADEMY SHOOTING RANGE IMPROVEMENTS FOR THE
 CALCASIEU PARISH SHERIFF'S OFFICE
 TONY MANCUSO, SHERIFF
 3958 MALLARD COVE STREET
 LAKE CHARLES, LA



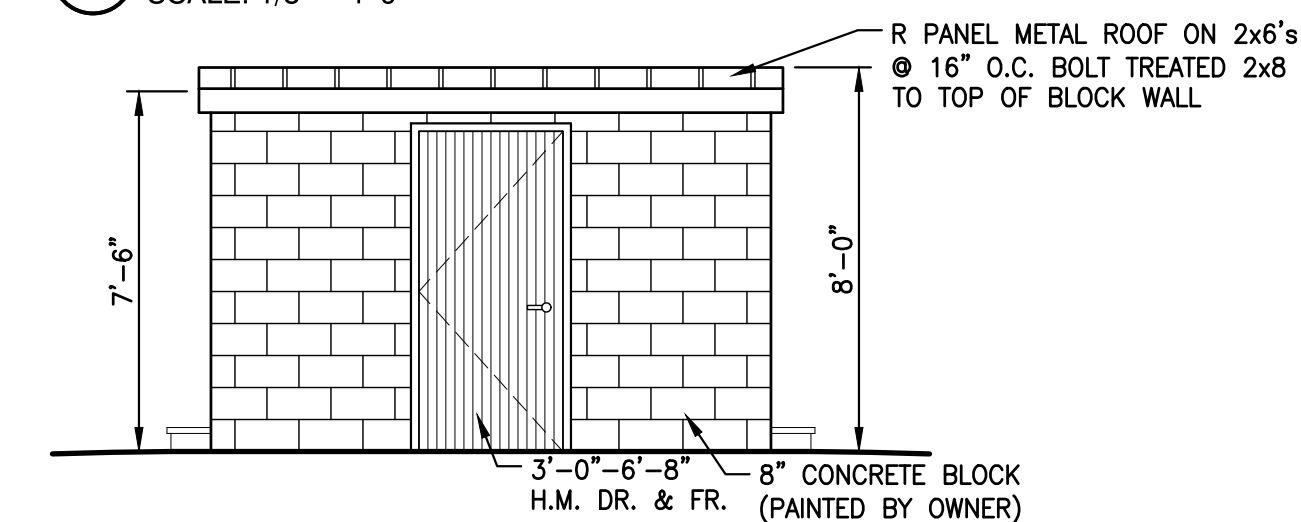
1 RANGE BOOTH FLOOR PLAN
 SCALE: 1/4" = 1'-0"



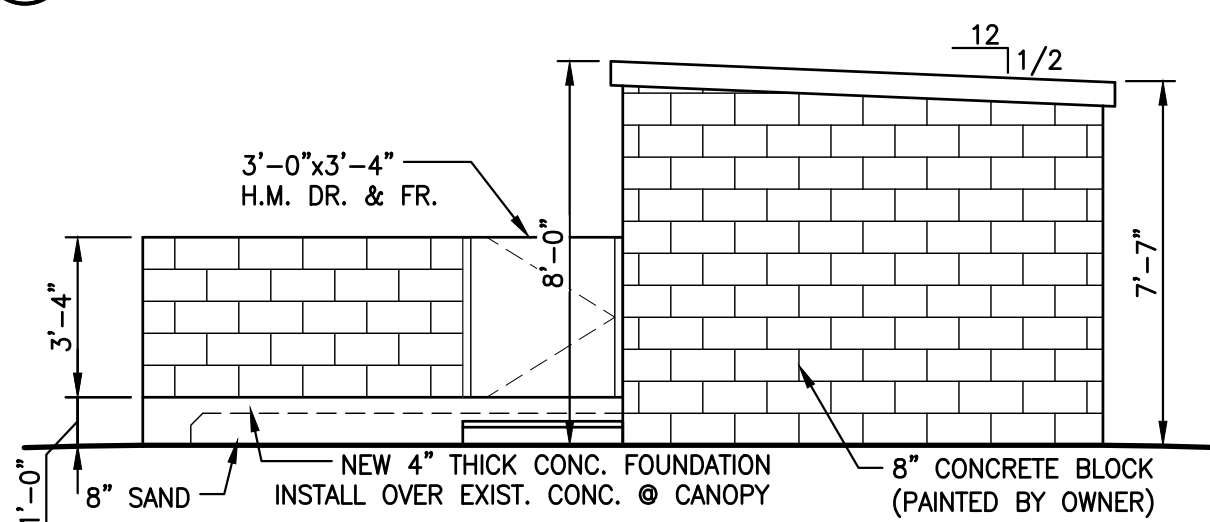
2 RANGE BOOTH LEFT SIDE ELEVATION
 SCALE: 1/8" = 1'-0"



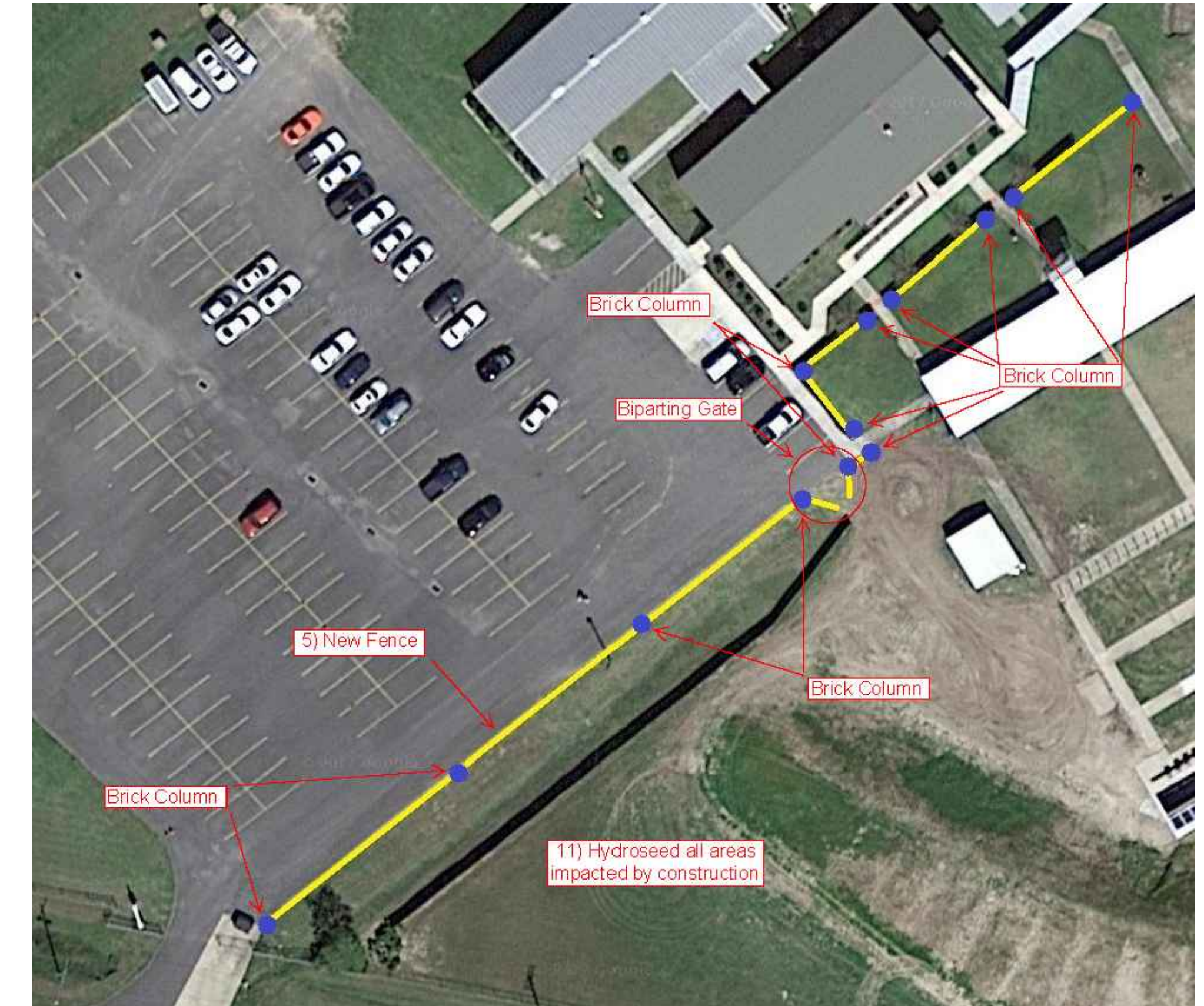
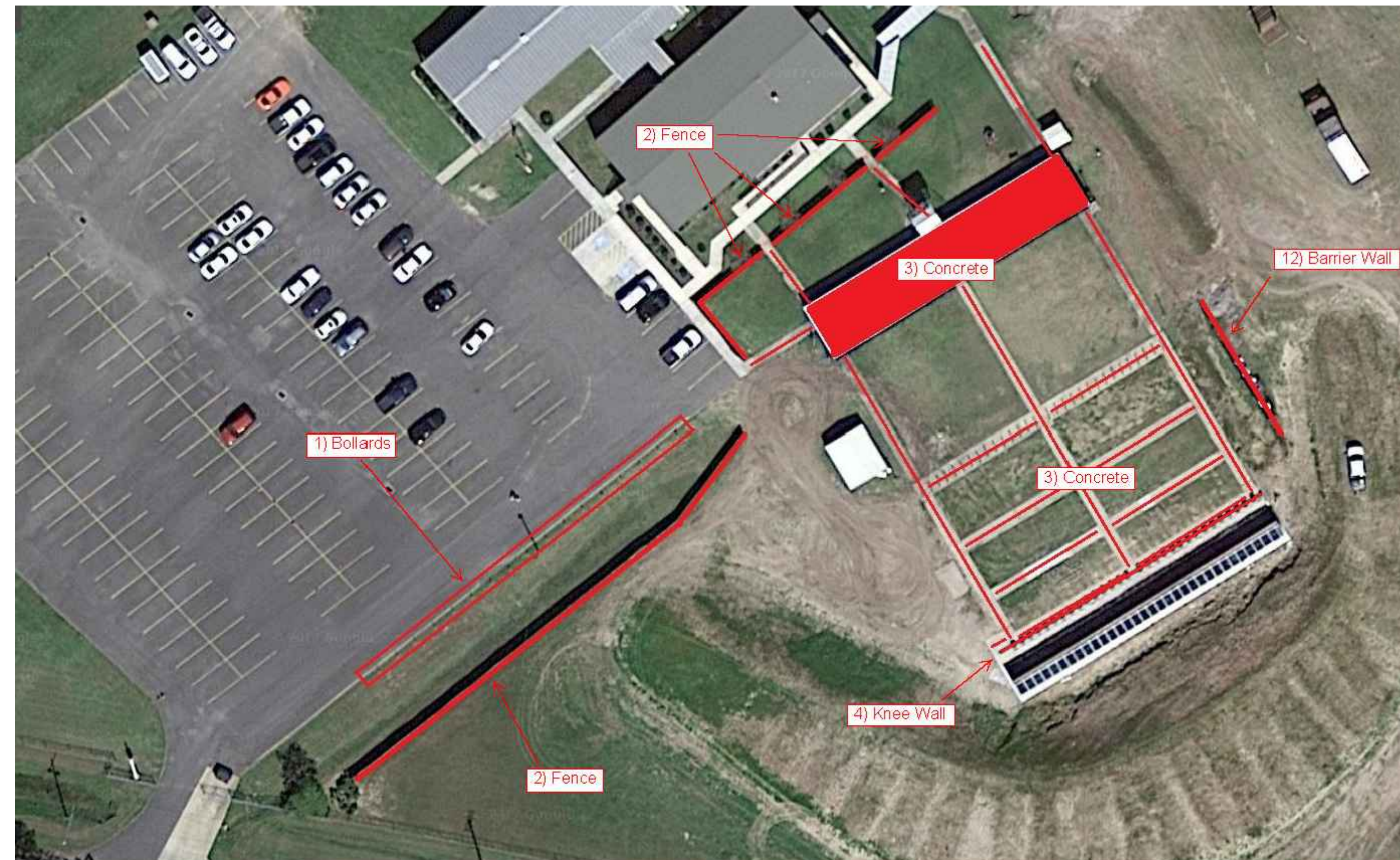
3 RANGE BOOTH FRONT ELEVATION
 SCALE: 1/8" = 1'-0"



4 RANGE BOOTH REAR ELEVATION
 SCALE: 1/8" = 1'-0"

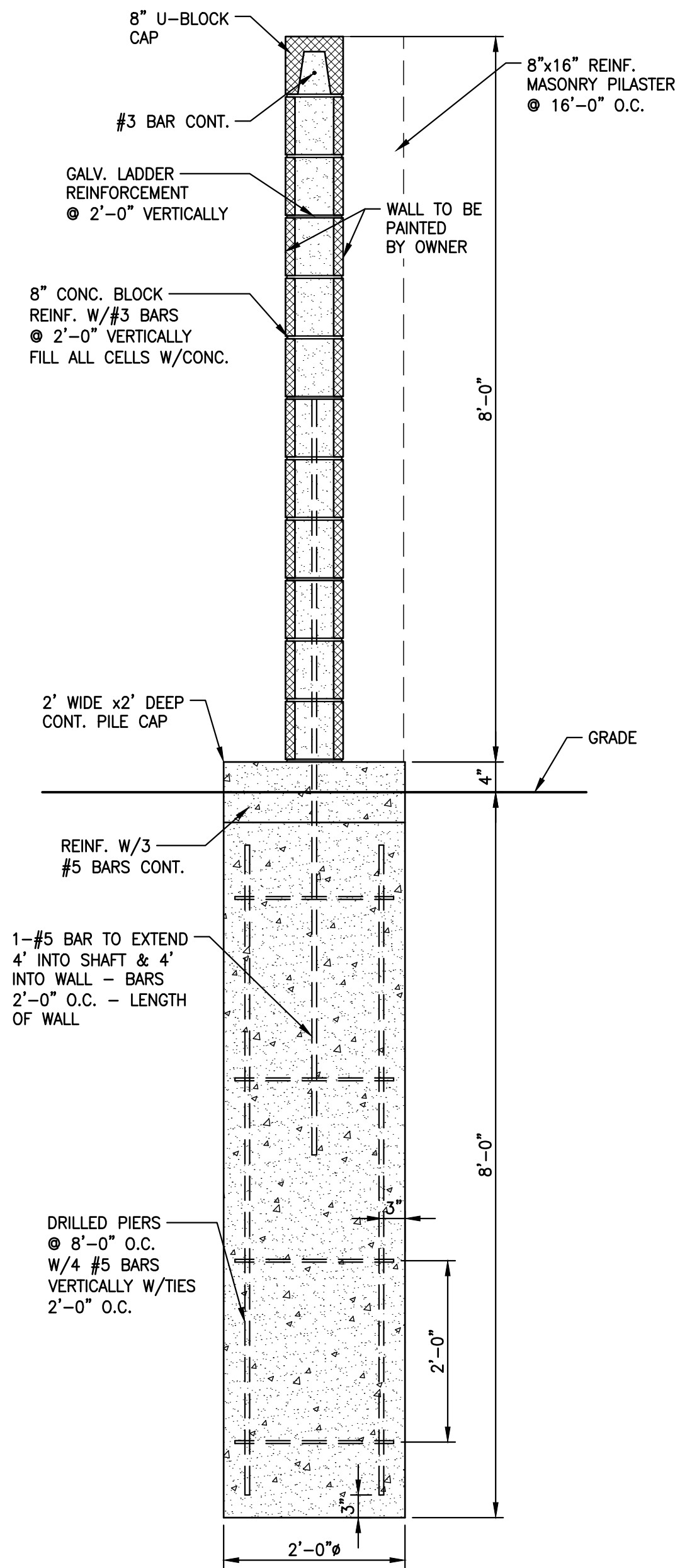


5 RANGE BOOTH RIGHT SIDE ELEVATION
 SCALE: 1/8" = 1'-0"

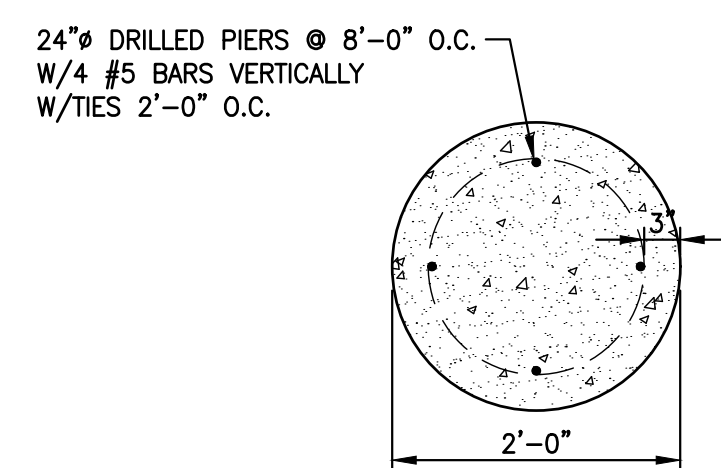


- GENERAL SCOPE OF WORK:**
- REMOVE AND DISPOSE OF "BOLLARDS" LINING THE PARKING LOT TO THE SOUTHEAST. RESULTING HOLES WILL NEED TO BE BACKFILLED AND COMPACTED FOLLOWED BY HYDROSEEDING OF DISTURBED AREAS.
 - REMOVE AND DISPOSE OF EXISTING FENCE.
 - REMOVE AND DISPOSE OF DESIGNATED CONCRETE WALKS AND SLABS.
 - REMOVE AND DISPOSE OF EXISTING KNEE WALL.
 - NEW FENCE TO BE CONSTRUCTED OF 6FT DOG EAR CEDAR PLANKS WITH 3 HORIZONTAL RUNNERS AND GALVANIZED SCHEDULE 40 POSTS LOCATED ON 8FT CENTERS. FENCE ALSO TO HAVE 5FT BIPARTING GATES WITH 1/4" STEEL FRAME AND WOOD PLANKS MATCHING REST OF FENCE. FENCE TO HAVE 13 BRICK COLUMNS 2FT X 2FT X 7FT TALL WITH FOUNDATIONS SUFFICIENT TO PREVENT SETTLING.
 - NEW CONCRETE AREA PAVING SHALL BE A MINIMUM OF BOTH 3000 PSI AND 4IN THICK UTILIZING 6X6-W2.9XW2.9 WELDED WIRE FABRIC. JOINTS SHALL NOT EXCEED 20FT ON CENTER AND USE SELF-LEVELING JOINT SEALANT. CONTRACTOR SHALL BE RESPONSIBLE FOR ALL GRADES AND POSITIVE DRAINAGE.
 - NEW CONCRETE KNEE WALL APPROXIMATELY 20IN TALL BY 136FT LONG AND 8IN THICK. WALL TO SUPPORT BALLISTIC RUBBER AND PROTECT TARGETS' MOVING PARTS.
 - AT DISTANCE OF 15YDS MEASURED FROM TARGETS, A QUANTITY OF 30 ALUMINUM "SLEEVES" ARE TO BE EMBEDDED IN CONCRETE SUCH THAT THE TOP OF THE SLEEVE IS FLUSH WITH THE TOP OF THE CONCRETE. THEY ARE TO BE SQUARED TO THE TARGETS. THIS WILL ALSO BE REPEATED AT A DISTANCE OF 25YDS RESULTING IN A TOTAL OF 60 SLEEVES.
 - NEW RANGE BOOTH AND STORAGE ROOM TO BE CONSTRUCTED (SEE ATTACHED DETAILS)
 - NEW DRAINAGE SYSTEM CONSISTING OF 4 BASINS THAT FEED INTO EXISTING DRAINAGE DITCH NORTHEAST OF SHOOTING RANGE.
 - HYDROSEED DISTURBED SOIL AFTER CONSTRUCTION IS COMPLETE.
 - REMOVE AND DISPOSE OF EXISTING BARRIER WALL.
 - NEW BARRIER WALL TO BE 8FT TALL, 125FT LONG, AND CONSTRUCTED OF CONCRETE ON EACH SIDE OF RANGE. TOTAL OF 250 LINEAR FEET. BASE BID SHALL BE PRE-CAST CONCRETE. ALTERNATE NO. 1 SHALL BE 8" CONCRETE MASONRY IN LIEU OF PRE-CAST.

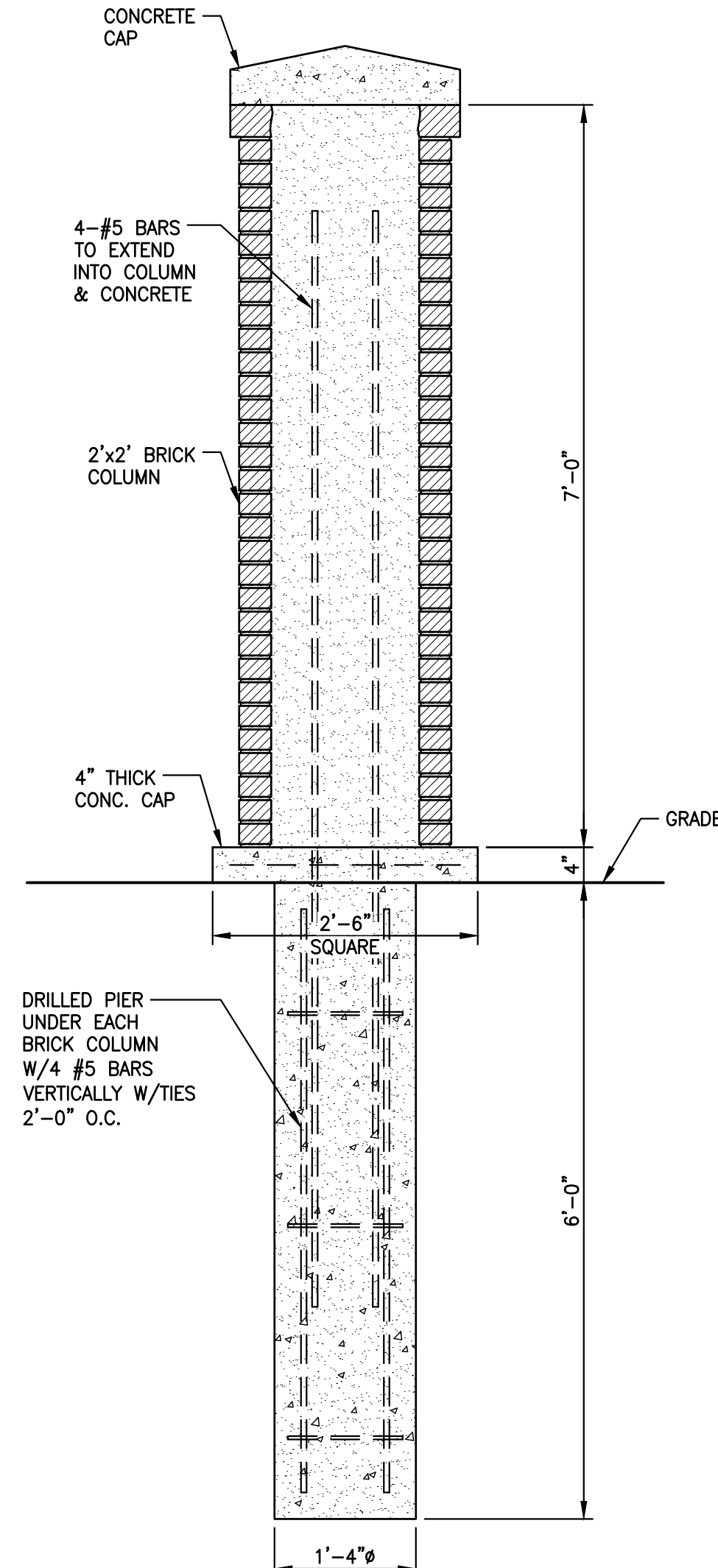
**TRAINING ACADEMY SHOOTING RANGE IMPROVEMENTS FOR THE
CALCASIEU PARISH SHERIFF'S OFFICE
TONY MANCUSO, SHERIFF
3958 MALLARD COVE STREET
LAKE CHARLES, LA**



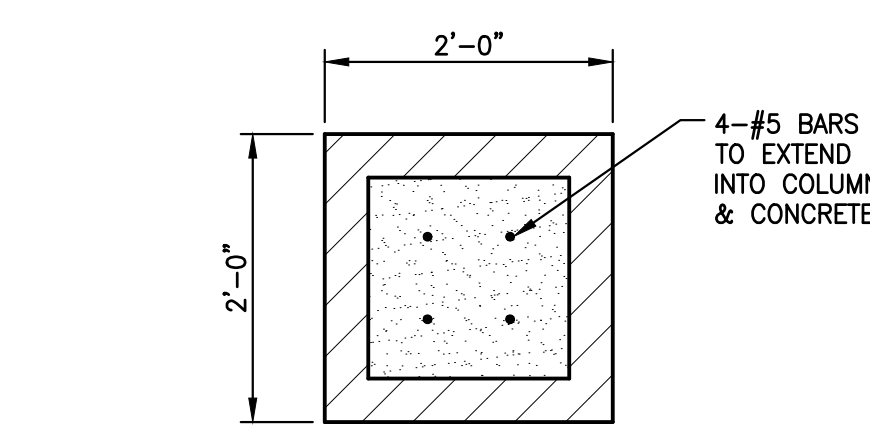
1 MASONRY - BARRIER WALL DETAIL - ALTERNATE NO. 1
SCALE: 3/4" = 1'-0"



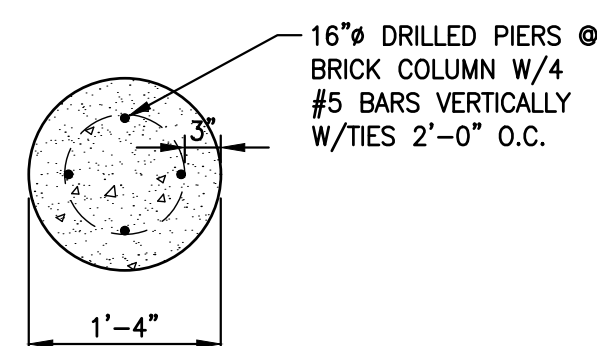
2 CONCRETE PIER DETAIL @ BARRIER WALL PLAN VIEW
SCALE: 3/4" = 1'-0"



3 BRICK COLUMN DETAIL
SCALE: 3/4" = 1'-0"

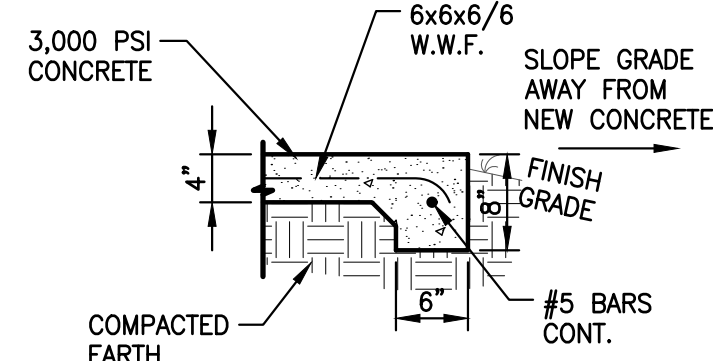


4 BRICK COLUMN DETAIL PLAN VIEW
SCALE: 3/4" = 1'-0"

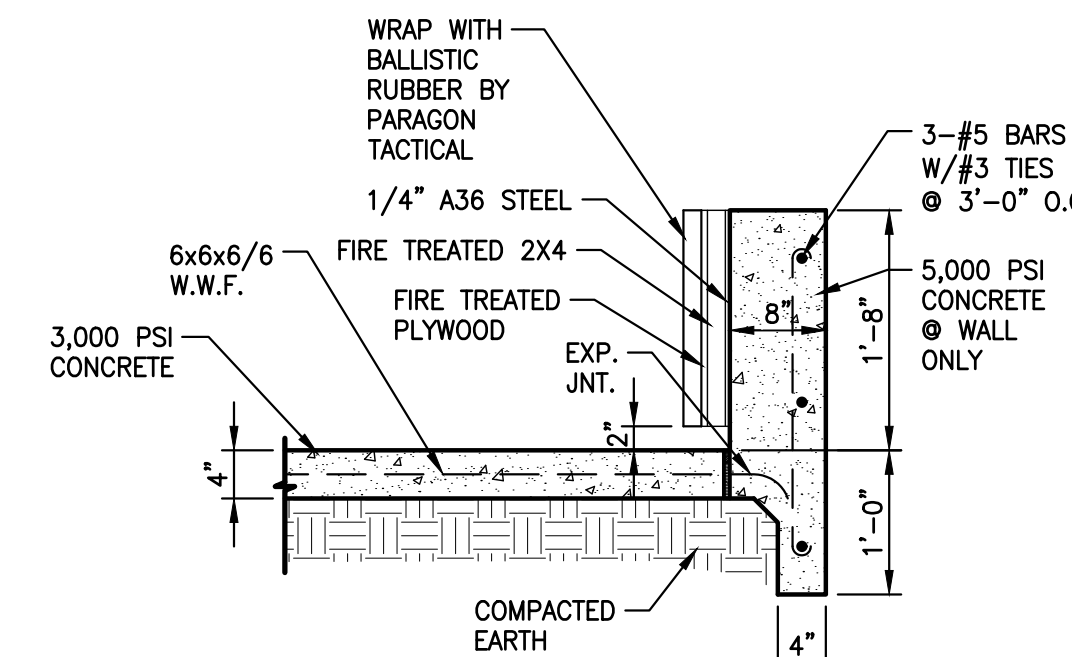


5 CONCRETE PIER DETAIL @ BRICK COLUMN PLAN VIEW
SCALE: 3/4" = 1'-0"

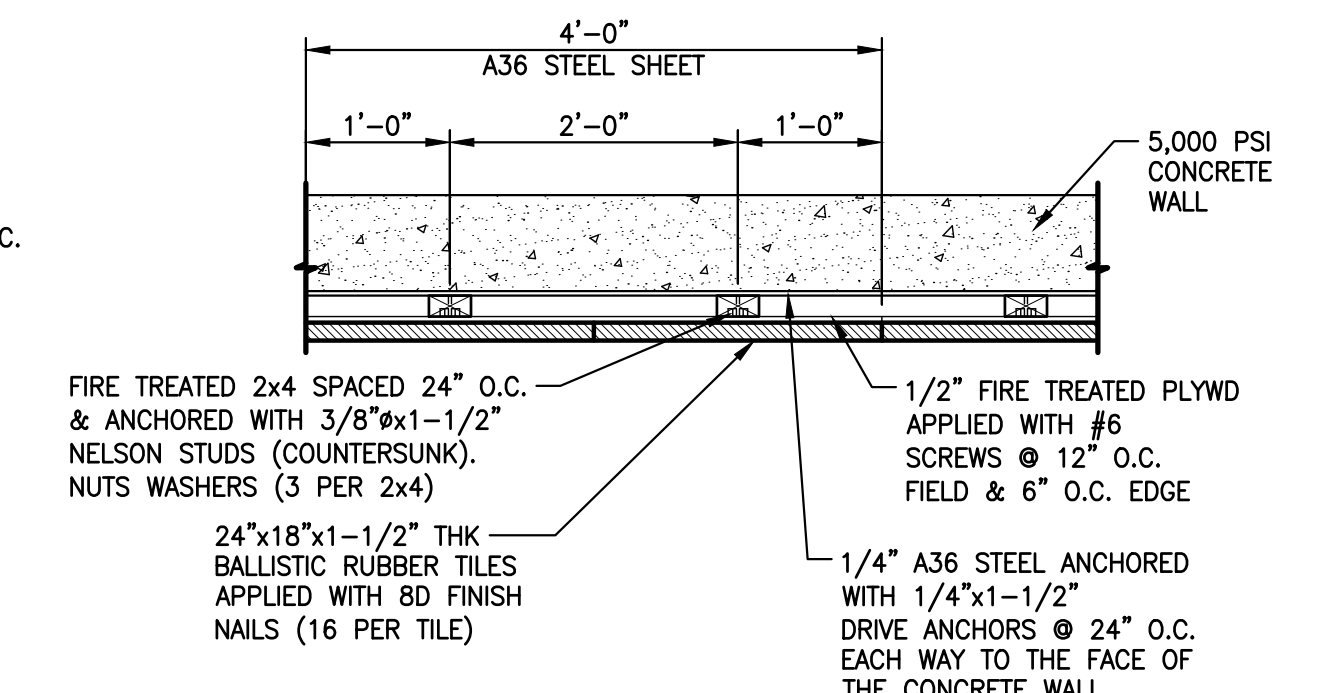
- FOUNDATION NOTES:**
1. A 10 MIL POLYETHYLENE VAPOR BARRIER SHALL BE INSTALLED, PRIOR TO PLACING REINFORCEMENT OR CONCRETE, AFTER APPROVAL OF PREPARED EARTHWORK.
 2. CONCRETE SHALL HAVE A MINIMUM 28 DAY COMPRESSIVE STRENGTH OF 3,000 PSI.
 3. REINFORCING STEEL SHALL BE GRADE 60 DEFORMED BARS CONFORMING TO ASTM A-615.
 4. WELDED WIRE MESH SHALL CONFORM TO ASTM A-185.
 5. REINFORCING STEEL SHALL BE PLACED WITH ADEQUATE CHAIRS AND TIES PLACED TO PREVENT SAGGING AND TO HOLD THE BAR RIGID DURING CONCRETE PLACEMENT. MINIMUM LAP FOR BAR SPLICES SHALL BE 30 BAR DIAMETERS.
 6. FINISHED CONCRETE SHALL BE PROTECTED AGAINST SURFACE MOISTURE BY USING A WATER BORNE APPROVED CURING COMPOUND APPLIED AS RECOMMENDED BY MANUFACTURER.
 7. REMOVE VEGETATION FROM TOP 4" OF SOIL AND INSTALL STRUCTURAL FILL TO REQUIRED ELEVATION IN MAXIMUM OF 8" LIFTS.



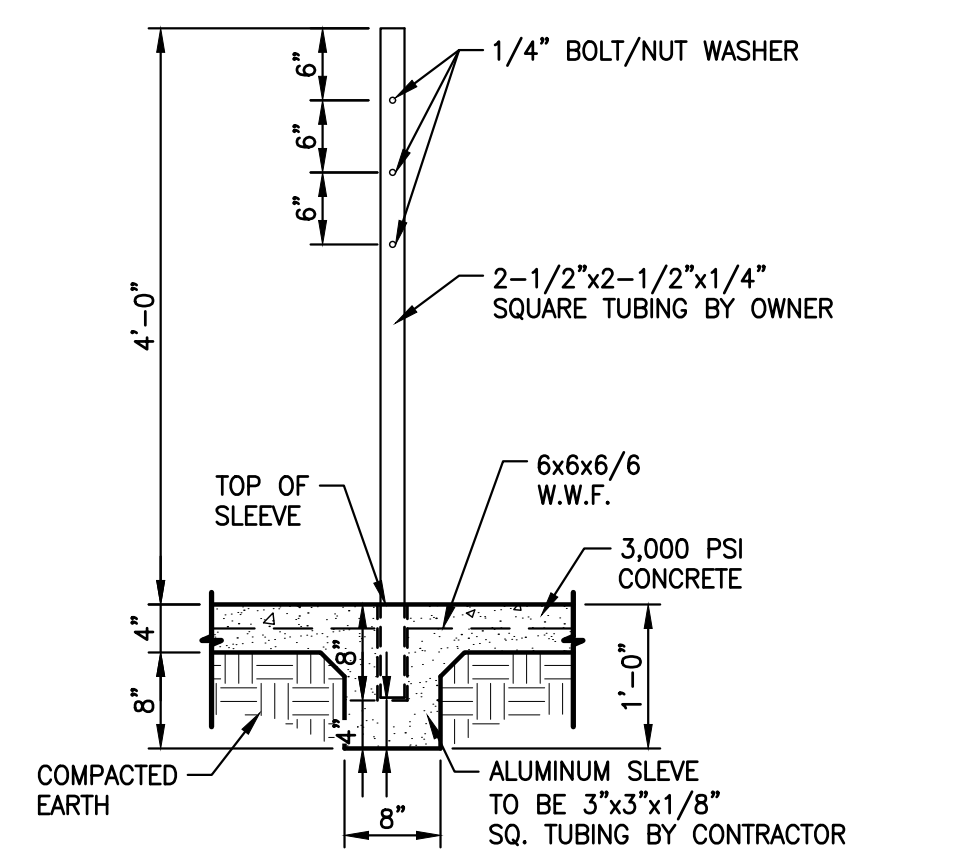
6 EDGE OF CONC. DETAIL
SCALE: 3/4" = 1'-0"



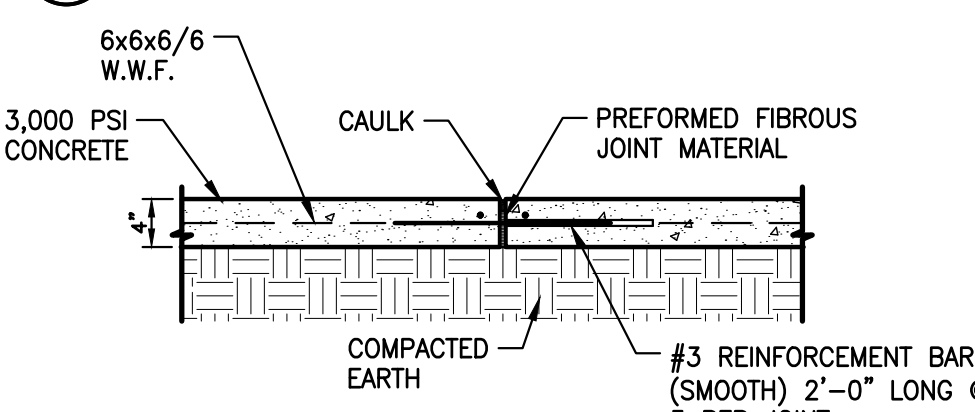
9 EDGE OF CONC. DETAIL
SCALE: 3/4" = 1'-0"



10 BALLISTIC RUBBER @ CONC. WALL PLAN VIEW
SCALE: 3/4" = 1'-0"



7 CONC. DETAIL @ ALUMINUM SLEEVE
SCALE: 3/4" = 1'-0"



8 EXP. JOINT DETAIL
SCALE: 3/4" = 1'-0"

GENERAL SCOPE OF WORK FOR PRE-CAST CONCRETE BARRIER WALL: BASE BID

1. A SOIL REPORT SHALL BE FURNISHED TO BIDDER FOR ENGINEERING DESIGN BY SUPPLIER.
2. CONCRETE PANELS SHALL BE APPROXIMATELY 25' LONG X 8' HIGH X 6" THICK. (A TOTAL OF 10)
3. PRE-CAST COLUMNS SHALL BE 16' X 2' X 2'. (A TOTAL OF 12)
4. SHAFTS SHALL BE DRILLED 8' DEEP X 30" IN DIAMETER TO SET COLUMNS. CONCRETE SHALL BE POURED AROUND THE BASE OF EACH COLUMN.
5. NO PAINTING IS REQUIRED.